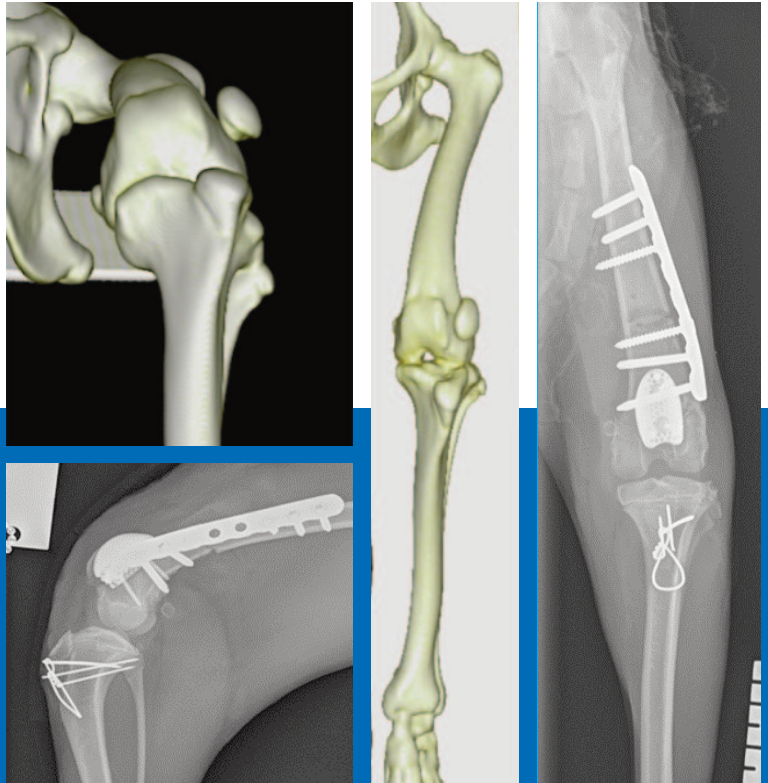


Patellar Groove Replacement at Rutland House Referrals

Complex lateral patella luxation in a 10 month old poodle.

Note the lack of any sulcus and the femoral varus, torsional and rotational deformities present.

Treatment was by patella groove replacement, opening wedge corticotomy, stabilised with a locking plate, and tibial crest transposition.



First described by Kyon in 2009, patella groove replacement (PGR) involves the application of a low friction titanium prosthesis treated with amorphous diamond like coating. The prosthesis is available in a range of sizes to capture the patella. Whilst not intended to be a first line treatment for uncomplicated low grade patella luxation, it is, as in the above case, is a useful component of treating complex patella luxation with severe limb deformity. Other indications are;

- Revision surgery
- Chronic or severe patellar luxation
- Severe loss of joint cartilage
- Severe trochlear deformity
- Nonreconstructable fractures involving the femoral trochlea

We are happy to discuss the potential indications and benefits of PGR with you, should feel that you have a patient who may benefit from this procedure.

Telephone 01744 853520, email referrals@rutlandhousevets.co.uk

or through our website www.rutlandreferrals.com